

Discover the super strong

Fibre-cement corrugated sheets

from Lightroof Systems!



Lightroof
Systems

Next-generation roof and wall cladding

www.lightroofsystems.com

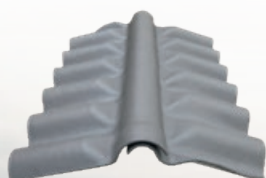
ESAL corrugated sheets

Eternit Slovenia, a subsidiary of the Swiss Pearl Group, manufactures ESAL fibre-cement corrugated sheets using the famous Swiss technology. Due to their excellent physical and mechanical properties, the corrugated sheets are ideal for the industrial and agricultural sectors. Eternit Slovenia is a subsidiary of the Swiss Pearl Group, which also includes Eternit Switzerland and Austria. The Swiss Pearl Group is the inventor of fibre-cement products and originated in Vöcklabruck in Austria. Through the sale of their patents, fibre-cement products have become a success worldwide.

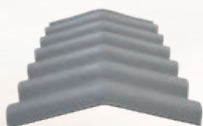
An overview of the advantages of ESAL corrugated sheets:

- ✓ VAPOUR OPEN AND MOISTURE REGULATING
- ✓ MANUFACTURED ACCORDING TO PROVEN SWISS TECHNOLOGY
- ✓ FIRE RATING A
- ✓ CORROSION RESISTANCE
- ✓ DOUBLE-PRESSED
- ✓ PRE-GROOVED CORNERS
- ✓ DELIVERY ON DISPOSABLE PALLETS
- ✓ ANTI-SKID STRUCTURE AVAILABLE AS OPTION
- ✓ ENVIRONMENTALLY FRIENDLY
- ✓ CE CERTIFIED

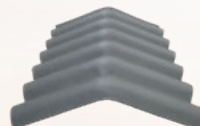
FINISH AND FITTINGS



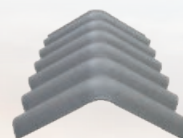
Hinged ridge



Fixed angle ridge 20°



Fixed angle ridge 25°



Fixed angle ridge 30°



COLOURS



Natural grey

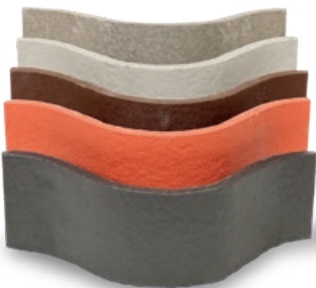
Light grey

Dark grey
(available from
stock)

Brown

Red

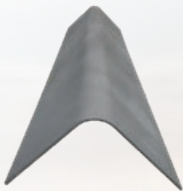
SWISS
pearl®



SPECIFICATIONS

Dimensions	Value	Tolerance	Standard
Length	see overview	± 10	EN 494
Width	1010	+ 10 - 5	EN 494
Working width	1050	/	/
Thickness	6.5	± 0.6	EN 494
Corrugated width centre to centre.	177	± 2	EN 494
Corrugated height	51	± 3	EN 494

Lengths
1220 mm
1530 mm
1600 mm
1830 mm
2140 mm
2440 mm
2750 mm
3050 mm



Bargeboard



Apron flashing



Hinged ridge cap



Screws





Lightroof Systems is a supplier of daylight-transmitting, solar-heat-resistant roof and wall sheets. Our starting point has always been to listen carefully to the wishes and needs of the client, with the ultimate goal of advising you on the right roof or wall system in which quality, animal welfare and labour efficiency are paramount.

- ✓ IMPROVES ANIMAL HEALTH
- ✓ OPTIMAL ENTRY OF DAYLIGHT
- ✓ SAVES ENERGY

- ✓ IMPROVES PRODUCTIVITY
- ✓ HIGH INSULATION VALUE
- ✓ INCREASES JOB SATISFACTION



Lightroof Systems

Next-generation roof and wall cladding

Lightroof Systems BV ■ Ruurloseweg 61a ■ 7271 RS BORCULO ■ The Netherlands
+31 (0)545 700205 ■ info@lightroofsystems.com ■ www.lightroofsystems.com